



# GAT MONTHLY MEMBERSHIP PROGRESS REPORT

Results as of: 4/30/2024

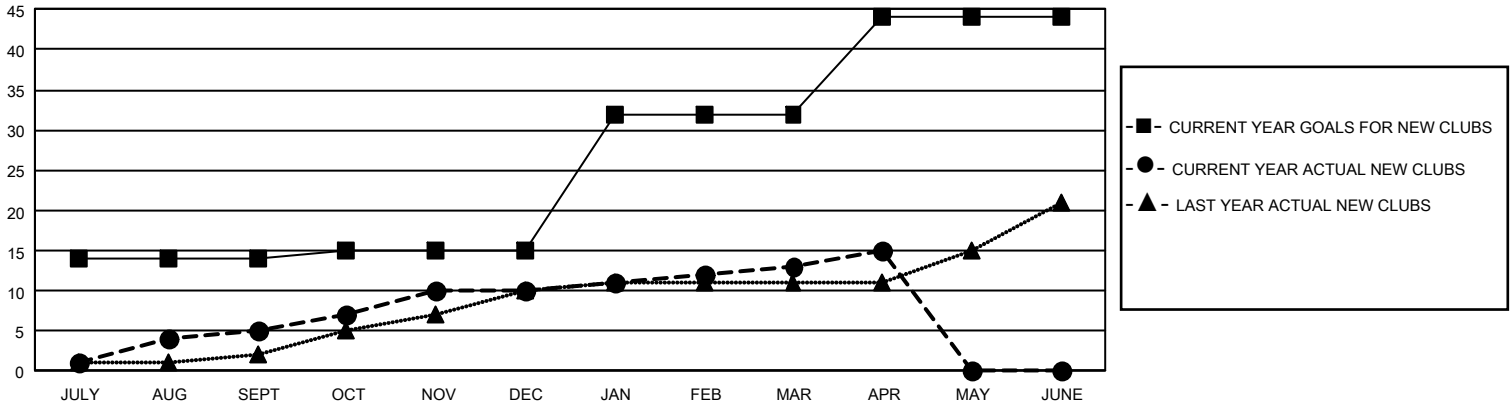
## GMT Constitutional Area 3, Group C

REPORT DOES NOT INCLUDE CLUBS IN UNDISTRICTED AREAS.

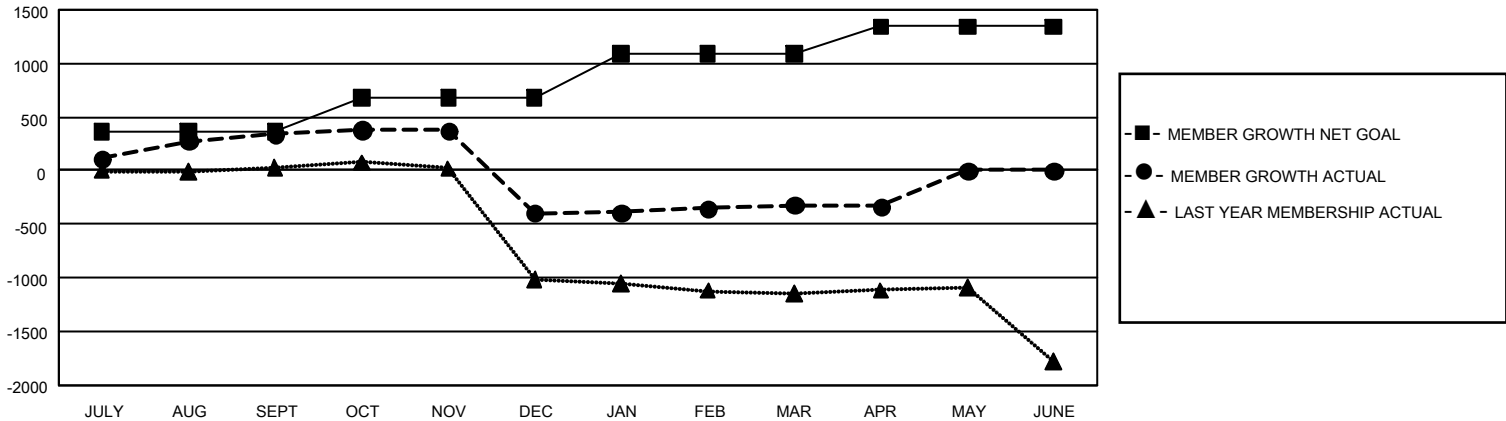
Clubs			
RESULTS FOR 2023-2024			
QUARTER	NEW CLUB GOAL	NEW CLUBS	DROPPED CLUBS
JULY/AUG/SEPT	42	5	4
OCT/NOV/DEC	3	5	20
JAN/FEB/MAR	51	3	6
APR/MAY/JUNE	36	2	7

Members			
RESULTS FOR 2023-2024			
QUARTER	MEMBER GROWTH NET GOAL	MEMBER GROWTH ACTUAL	DROPPED MEMBERS ACTUAL (including transfers)
JULY/AUG/SEPT	361	754	296
OCT/NOV/DEC	315	497	1,169
JAN/FEB/MAR	416	534	350
APR/MAY/JUNE	252	151	133

GOALS AND ACTUAL NEW CLUBS CUMULATIVE



GOALS AND ACTUAL MEMBERS CUMULATIVE



<b>DROPPED CLUBS: 37</b>	360 CLUBS OF 807 ADDED 1 OR MORE NEW MEMBERS	<b>GENDER DISTRIBUTION</b>	
		MALE 7,899 (48.92%) FEMALE 8,241 (51.04%) NON BINARY 0 (0.00%) PREFER NOT TO ANSWER 6 (0.04%)	
<b>DROPPED MEMBERS</b>		<a href="#">CLICK HERE FOR CUMULATIVE MEMBERSHIP DATA</a>	TOTAL FAMILY UNIT MEMBERS 6,532
DECEASED 103 CLUB CANCELLED 405 OTHER 1,440 <b>TOTAL 1,948</b>			FAMILY MEMBERS PAYING HALF DUES 3,901